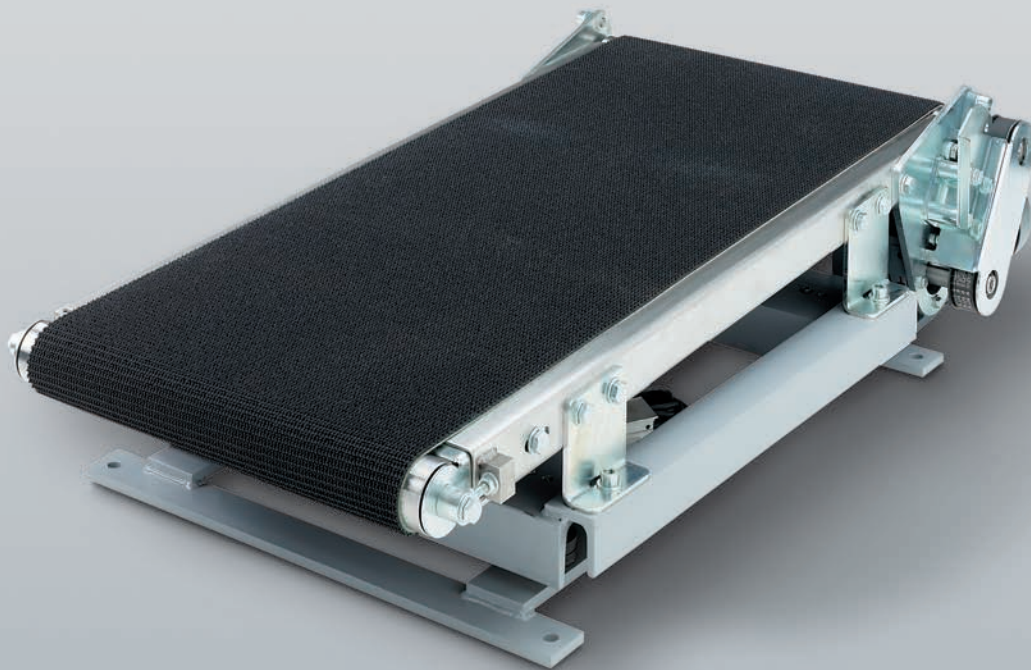


LUGGAGE SCALE

PRODUCT NUMBER 3015 INCL. 2819, 2883 AND 2885

System solutions



- › Easy to adapt
- › Modular system components
- › Plug-in modules
- › Reference module
- › Flat design

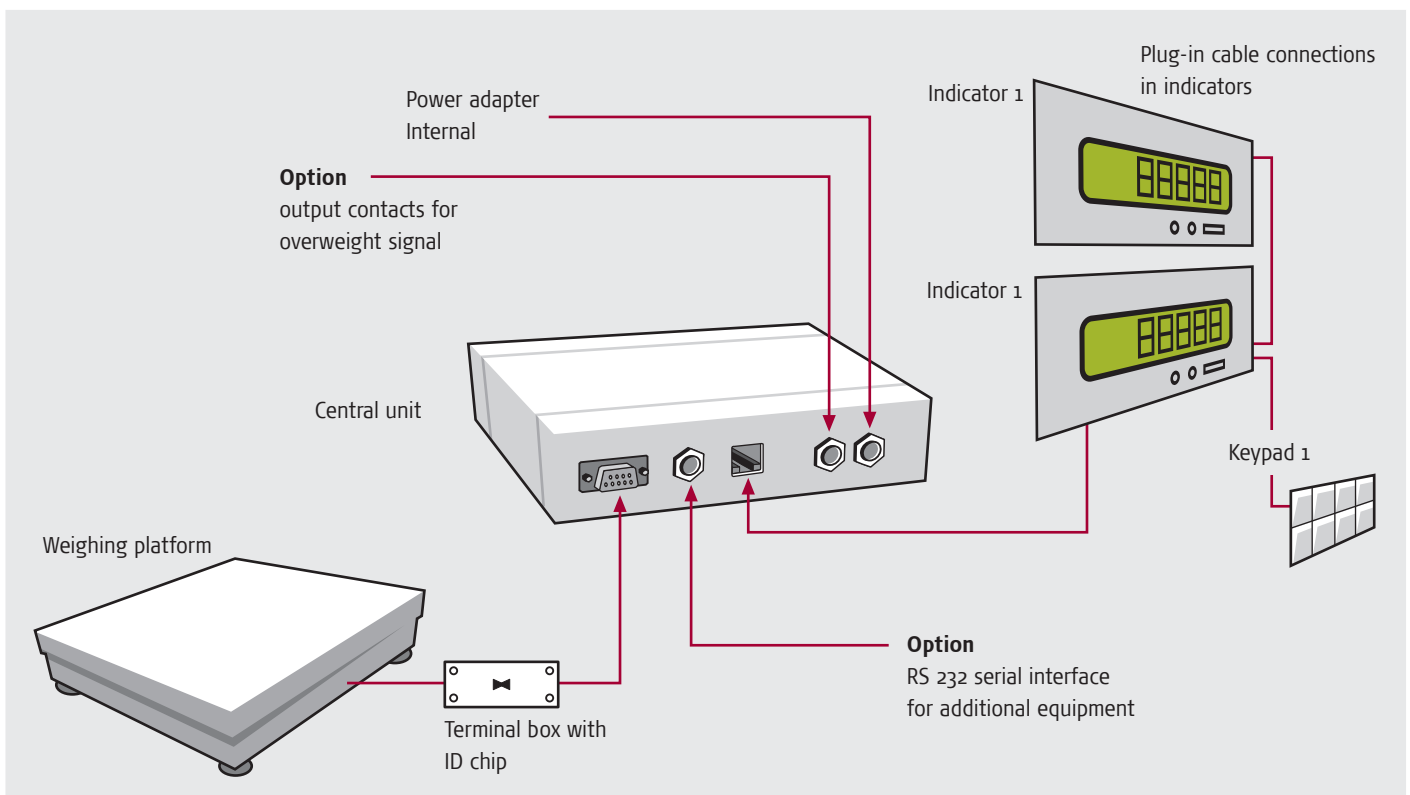
Features

Soehnle Professional luggage scales are practice-proven, reliable and user-friendly weighing facilities for airport check-in desks. Standardised modules result in a variable system. Through close cooperation with materials handling system manufacturers, we achieve optimal solutions for every application. Since the focal point at Soehnle Professional is on service, an experienced engineering team accompanies you from the planning stage through to commissioning. Like all Soehnle Professional scales, the Luggage Scale 3015 is carefully adjusted and tested at the factory as well as prepared for installation.

Technical data

- › Weighing range: 2 x 6 000e
- › Approval in compliance with OIML R76, Class III
- › Zero range -1% to +3% of weighing range
- › Operating temperature -10°C to +40°C
- › Variable adaptation possible, function dependent on operating specifications
- › Backlit LC display
- › Digit height 16mm
- › Mains power 230V, 50/60Hz
- › Indicator and keypad for decentralised installation

Diagram of luggage scale



Electronics

- > Internal power supply 230V AC 50/60Hz (standard)
- > Optional power plug for UK/US/CH
- > Optional keypad cable with non-terminated end for connection to existing keypad (customer supply)
- > Keypad module with membrane and 4 or 8 keys dependent on the functions
- > DC/DC converter with 12VDC or 24VDC as option
- > Alibi memory option
- > Real-time clock
- > Option: RS 232, V24 and other interfaces, e.g. Ethernet TCP/IP, USB etc.

Functions

- > Totalise
- > Show total
- > Clear total
- > Overweight indicator (red LED)
- > Totalising performed (yellow LED)
- > Floating overweight signal (option)
- > Number of luggage items
- > Additional total memories for day/month/year totals
- > Remote control possible via interface

Other functions available on request.

Weighing platforms

Type 2819

- > 4 strain gauge load cells
- > Dimensions: up to 1 800 x 800mm (l x w)
- > Load-bearing capability up to 400kg
- > EU approval possible ex factory

Type 2883

- > 2 strain gauge load cells
- > Dimensions: up to 2 500 x 660mm (l x w)
- > Load-bearing capability up to 300kg
- > EU approval possible ex factory

Type 2885

- > 1 strain gauge load cell
- > Dimensions: up to 1000 x 600mm (l x w)
- > Load-bearing capability up to 250kg
- > EU approval possible ex factory

Indicators



Square as standard

- Indicates weight or total weight
- Indicates overweight by red LED
- Indicates total weight by yellow LED



Oval as standard

- Indicates weight or total weight
- Indicates overweight by red LED
- Indicates total weight by yellow LED



Double indicator: main indicator (for operators)

- Simultaneous indication of unit and total weight and number of luggage items



Double indicator: additional indicator (for passengers)

- Indicates total weight



Compact indicator

- Simultaneously indicates piece counts and unit or total weight

FOR MEASURABLE SUCCESS

SOEHNLE
PROFESSIONAL

Your Soehnle Professional dealer:

www.soehnle-professional.com